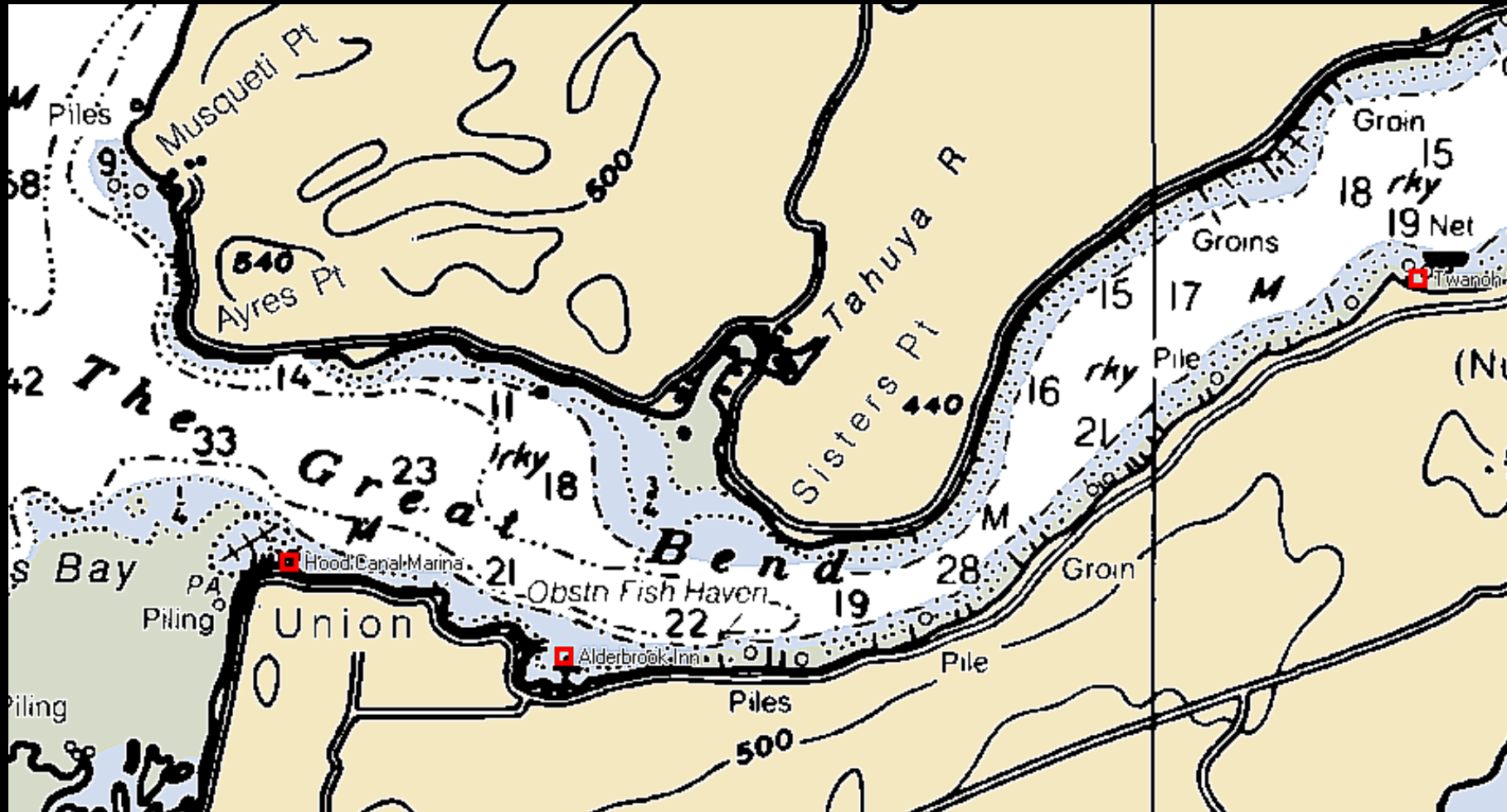


# Twanoh State Park

by CARL TENNING





NO  
LIFEGUARD

CLOSED







North Mason Regional Fire Authority  
Life Jacket Loaner Program

**Borrow Life Jackets Here** .... Return when finished

Check label for weight or chest size    Put life jacket on    Buckle and tighten all straps or zippers    Have the wearer lift arms over their head and gently pull up



PLEASE HELP  
PROTECT OUR WATER QUALITY AND BEAUTIFUL ENVIRONMENT

WATERFOWL HUNTING IS PROHIBITED  
ON THIS BEACH

1. No hunting or possession of firearms on the beach.

2. No hunting or possession of firearms on the beach.

3. No hunting or possession of firearms on the beach.

4. No hunting or possession of firearms on the beach.

5. No hunting or possession of firearms on the beach.

6. No hunting or possession of firearms on the beach.

7. No hunting or possession of firearms on the beach.

8. No hunting or possession of firearms on the beach.

9. No hunting or possession of firearms on the beach.

10. No hunting or possession of firearms on the beach.


**SHELLFISH HARVESTING  
CLOSED  
ON THIS BEACH**

Shellfish are unsafe to eat due to pollution.

- No eating
- No drinking
- No shellfish harvesting




North Mason Regional Fire Authority  
**Life Jacket Loaner Program**  
**Borrow Life jackets Here** .... Return when finished



Check label for weight or chest size    Put life jacket on    Buckle and tighten all straps or zippers    Have the wearer lift arms over their head and gently pull up



**PLEASE HELP PRESERVE OUR BEAUTIFUL AND FRAGILE ENVIRONMENT**



**BEHAVIOR CAN MAKE A DIFFERENCE**  
 1. Stay on the trail. Do not dig for roots or rocks.  
 2. Properly dispose of trash. Do not burn, bury, or scatter trash. Use the trash receptacles provided.  
 3. Do not feed wildlife.  
 4. Do not use vehicles, ATVs, or off-road vehicles on trails.  
 5. Do not use chainsaws, chainsaws, or other power tools on trails.  
 6. Do not use pesticides, herbicides, or other chemicals on trails.  
 7. Do not use fire.

**CARRIAGES, BICYCLES, MOTOR VEHICLES, AND ALL-TERRAIN VEHICLES ARE PROHIBITED ON TRAILS.**

**SHELLFISH HARVESTING CLOSED ON THIS BEACH**

Shellfish are unsafe to eat due to pollution, such as:


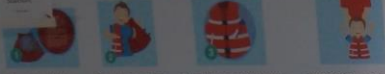
- bacteria
- viruses
- harmful chemicals

Do not consume shellfish from this beach.



**North Mason Regional Fire Authority**  
**Life Jacket Loaner Program**


**Borrow Life jackets Here** ... Return when finished

Check label for weight or chest size    Put life jacket on    Buckle and tighten all straps or zippers    Have the wearer lift arms over their head and gently pull up



**PLEASE HELP PRESERVE PUGET SOUND'S BOUNTIFUL AND FRAGILE ENVIRONMENT**



**BOATERS CAN MAKE A DIFFERENCE THIS IS WHAT WE CAN DO:**

1. Slow or stop at boat launch. Check for and remove trash or debris.
2. Dispose of sewage properly by using a pump-out station. Never dump raw sewage overboard. Empty your holding tank, pump out, and discharge pump-out water into the receiving water parcel.
3. Practice good boat maintenance. Keep your engine well-tuned, receive clean oil, use a leak sponge, and clean up any spills and hydrocarbon leaks.

**CAPTAINS: INSURE THAT YOUR CREW, GUESTS, AND FELLOW BOATERS FOLLOW THESE PRACTICES. SET A GOOD EXAMPLE.**

**SHELLFISH HARVESTING CLOSED ON THIS BEACH**

Shellfish are unsafe to eat due to pollution, such as:

- bacteria
- viruses
- harmful chemicals

For more information, call 206-462-3333 or visit [www.wa.gov/shellfish](http://www.wa.gov/shellfish)















