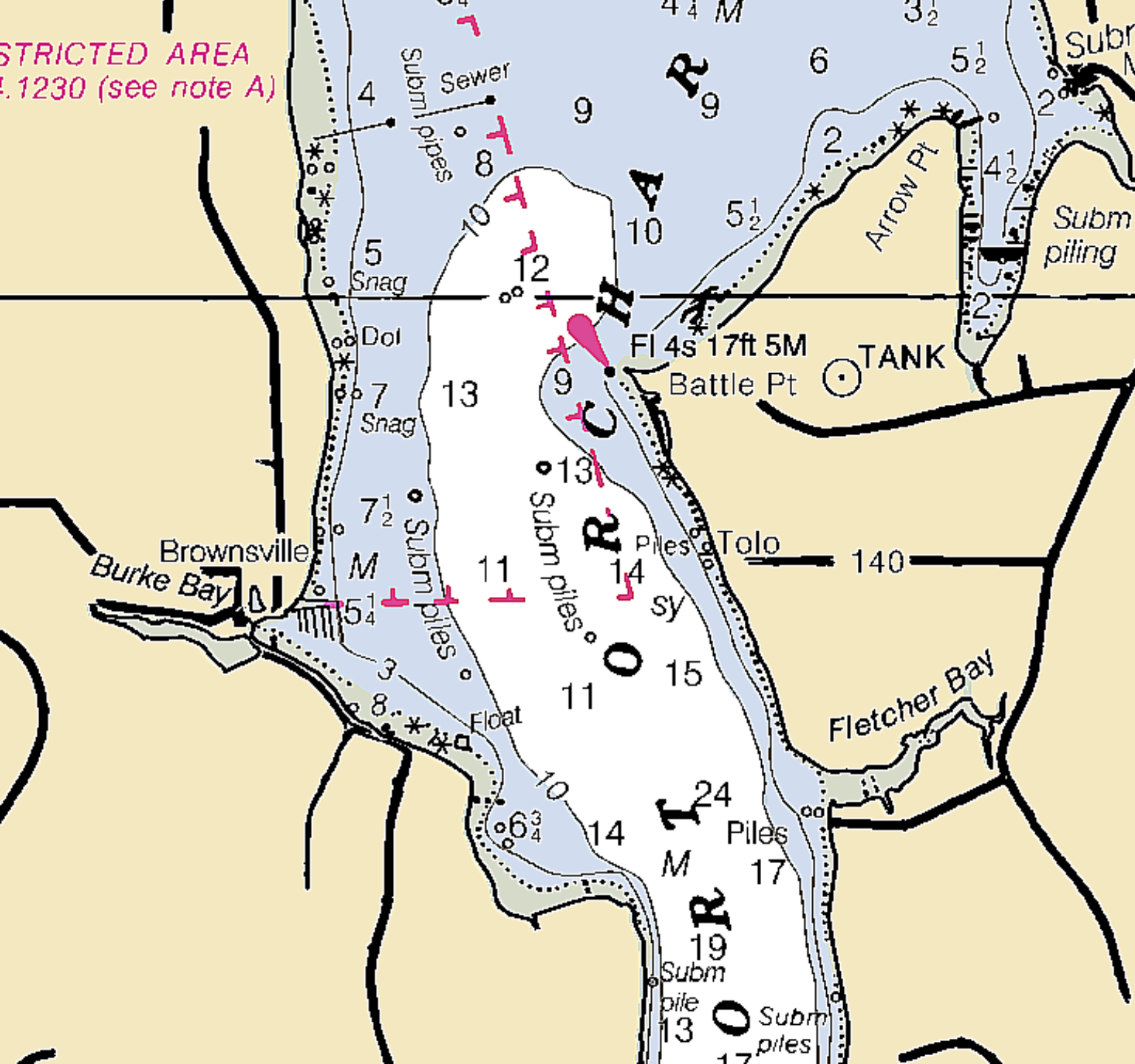


RESTRICTED AREA
1.1230 (see note A)



Brownsville

by CARL TENNING

































PORT OF
BROWNSVILLE

A wooden structure housing a row of mailboxes. From left to right, there is a white U.S. Mail mailbox, a brown mailbox with a yellow fire hydrant behind it, a white mailbox, a brown mailbox, a brown mailbox, a brown mailbox with a white label, a brown mailbox with a white label, a white U.S. Mail mailbox, and a black mailbox. Below the mailboxes are three blue mail slots. To the right of the mailboxes is a white sign that reads "EXIT ONLY".

ANCE
ILY

EXIT ONLY



9790

Brownsville Yacht Club
NOW ACCEPTING MEMBERSHIP APPLICATIONS

BROWNSVILLE MARINE & DELI

*Stud
at
the Club*

NO LID
LIFTED

NO
SMOKING

SELF
PARKING

SELF
PARKING
ONLY

Chico's
TOWING

WE
HAVE
A
NEW
SELECTION



