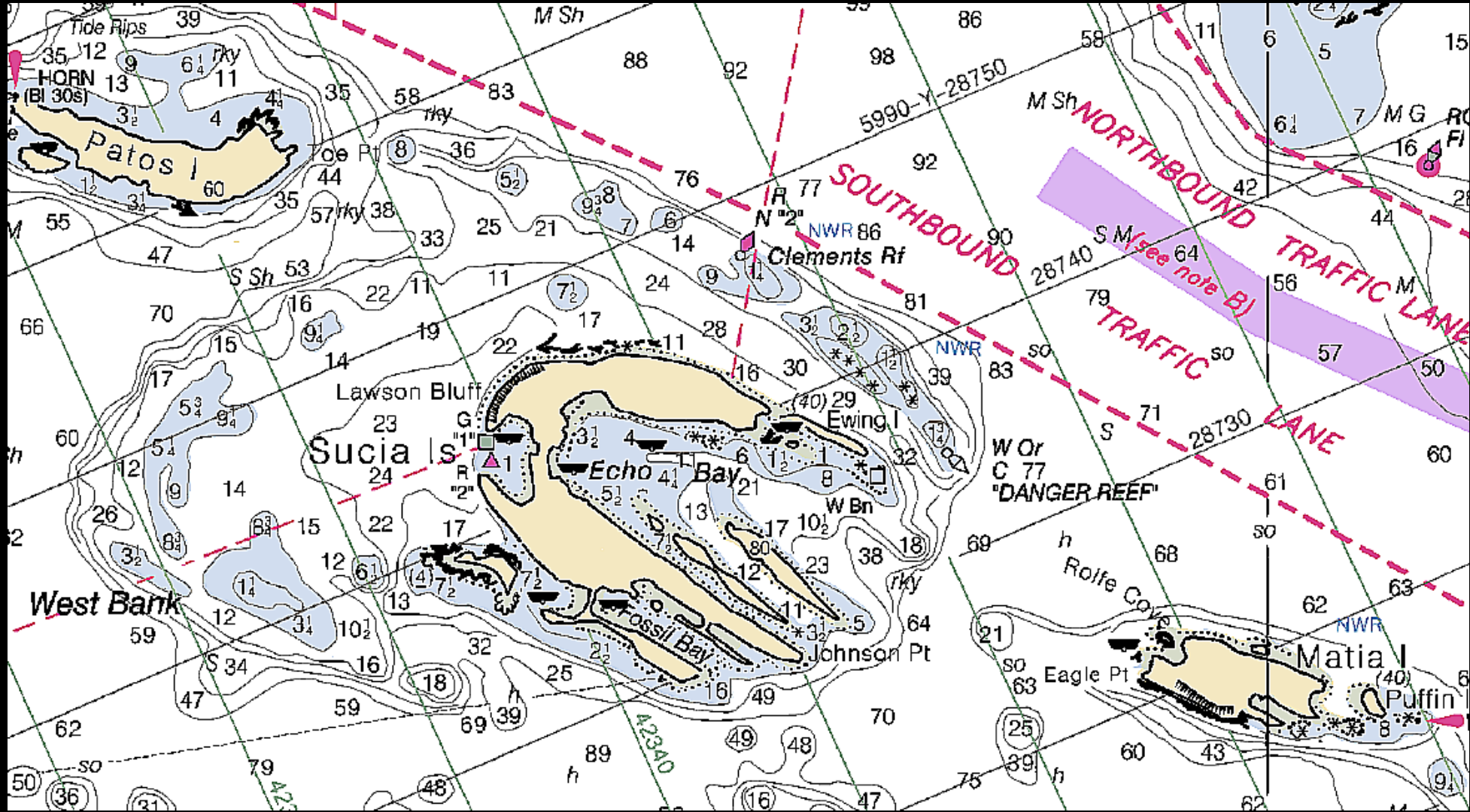


Sucia Island

by CARL TENNING





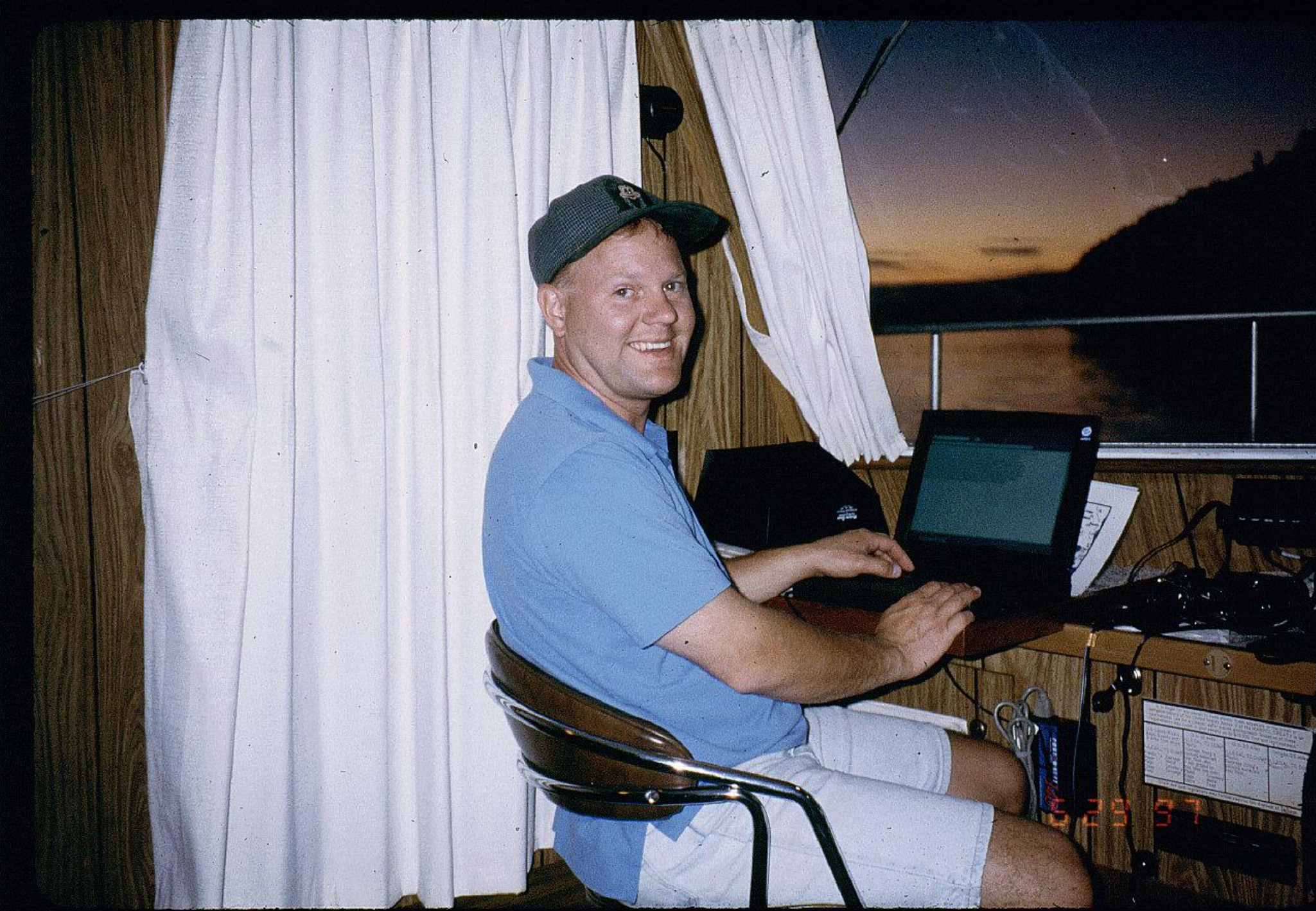




WN 1429 KX



8 27 77



Small sign on the desk with text, possibly a log or schedule.

10:28:57



JUN 30 2005



JUN 30 2005



JUN 30 2005



JUN 30 2005



JUN 30 2005



JUN 30 2005



JUN 30 2005



JUN 30 2005



JUN 30 2005



JUN 30 2005



JUN 30 2005





JUN 30 2005



JUN 30 2005



JUN 30 2005





JUN 30 2005



JUN 30 2005



JUN 30 2005



JUN 30 2005



JUN 30 2005



JUN 30 2005



JUN 30 2005



JUN 30 2005



JUN 30 2005



JUN 30 2005



JUN 30 2005



JUN 30 2005



JUN 30 2005



JUN 30 2005



JUN 30 2005



JUN 30 2005



JUN 30 2005



JUN 30 2005



JUN 30 2005



JUN 30 2005



JUN 30 2005



JUN 30 2005



JUN 30 2005



JUN 30 2005



JUN 30 2005



JUN 30 2005



JUN 30 2005



JUN 30 2005



JUN 30 2005



JUN 30 2005



SUCIA ISLAND

PURCHASED BY PUGET SOUND INTERCLUB ASSOCIATION
AND PLACED IN THE TRUST OF THE STATE 4-29-60
FOR YACHTSMEN FOREVER, CONTRIBUTING CLUBS.

POINT EV HENRY

ANACORTES Y. C.

ANCHOR BELL Y. C.

BELLINGHAM BOAT OWNERS ASS'N

BELLINGHAM Y. C.

BELLINGHAM WHEEL & KEEL

BREMERTON BOATING CLUB

BREMERTON Y. C.

CORINTHIAN Y. C.

DAY ISLAND Y. C.

EVERETT Y. C.

HOLIDAY SAILORS

INTERNATIONAL Y. C.

MEYDENBAUER Y. C.

OLYMPIA OUTBOARD ASS'N

OLYMPIA Y. C.

ORCAS ISLAND Y. C.

PORT ANGELES Y. C.

PORT ORCHARD Y. C.

PORT TOWNSEND Y. C.

POULSBO Y. C.

PUGET SOUND O.B.C.C.

QUARTERMASTER Y.C.

QUEEN CITY Y. C.

RAINIER Y. C.

ROCHE HARBOR Y.C.

SAND POINT Y. C.

SEA SCOUTS

SEATTLE Y. C.

SHELTON Y. C.

TACOMA OUTBOARD ASS'N

TACOMA Y. C.

TOTEM Y. C.

TYEE Y. C.

VAGABOND O.B. BOATING CLUB

WAVE TOPPERS

WHIDBEY - DEC. BOAT CLUB

BREMERTON POWER SQUADRON

SEATTLE POWER SQUADRON

TACOMA POWER SQUADRON

L. & K. CRUISE CLUB

VIKING YACHT CLUB

SPOKANE YACHT CLUB

JUN 30 2005



JUN 30 2005



STATE
PARKS

FURUKA

YRUOREM



Brown Fern

135

JUN 30 2005



JUN 30 2005



JUN 30 2005



JUL 1 2005



7 25 98





























DANGER

**CONFINED SPACE
ENTER BY
PERMIT ONLY**

**AVOID CONFINED SPACE
MAINTENANCE INSTRUCTIONS SUMMARY**

1. Before entering a confined space, the following steps must be taken:

- a. Obtain a permit to enter a confined space.
- b. Identify the confined space and the hazards associated with it.
- c. Test the atmosphere for oxygen, flammable gases, and toxic gases.
- d. Ventilate the confined space.
- e. Post warning signs and barriers around the confined space.
- f. Assign a trained attendant to remain outside the confined space.
- g. Use proper fall protection techniques.
- h. Use proper lifting techniques.
- i. Use proper communication techniques.
- j. Use proper rescue techniques.

2. The following steps must be taken when working in a confined space:

- a. Wear appropriate personal protective equipment (PPE).
- b. Use proper work practices.
- c. Monitor the atmosphere for changes.
- d. Communicate with the attendant.
- e. Use proper rescue techniques.

3. After exiting the confined space, the following steps must be taken:

- a. Notify the attendant.
- b. Remove the permit.
- c. Clean up the work area.
- d. Report any incidents or injuries.

DANGER

**CONFINED SPACE
ENTER BY
PERMIT ONLY**





IC1: 74VHC00 (NAND)

IC2: 74VHC00 (NAND)

IC3: 74VHC00 (NAND)

IC4: 74VHC00 (NAND)

IC5: 74VHC00 (NAND)

IC6: 74VHC00 (NAND)

IC7: 74VHC00 (NAND)

IC8: 74VHC00 (NAND)

IC9: 74VHC00 (NAND)

IC10: 74VHC00 (NAND)

IC11: 74VHC00 (NAND)

IC12: 74VHC00 (NAND)

IC13: 74VHC00 (NAND)

IC14: 74VHC00 (NAND)

IC15: 74VHC00 (NAND)

IC16: 74VHC00 (NAND)

IC17: 74VHC00 (NAND)

IC18: 74VHC00 (NAND)

IC19: 74VHC00 (NAND)

IC20: 74VHC00 (NAND)

IC21: 74VHC00 (NAND)

IC22: 74VHC00 (NAND)

IC23: 74VHC00 (NAND)

IC24: 74VHC00 (NAND)

IC25: 74VHC00 (NAND)

IC26: 74VHC00 (NAND)

IC27: 74VHC00 (NAND)

IC28: 74VHC00 (NAND)

IC29: 74VHC00 (NAND)

IC30: 74VHC00 (NAND)

IC31: 74VHC00 (NAND)

IC32: 74VHC00 (NAND)

IC33: 74VHC00 (NAND)

IC34: 74VHC00 (NAND)

IC35: 74VHC00 (NAND)

IC36: 74VHC00 (NAND)

IC37: 74VHC00 (NAND)

IC38: 74VHC00 (NAND)

IC39: 74VHC00 (NAND)

IC40: 74VHC00 (NAND)

IC41: 74VHC00 (NAND)

IC42: 74VHC00 (NAND)

IC43: 74VHC00 (NAND)

IC44: 74VHC00 (NAND)

IC45: 74VHC00 (NAND)

IC46: 74VHC00 (NAND)

IC47: 74VHC00 (NAND)

IC48: 74VHC00 (NAND)

IC49: 74VHC00 (NAND)

IC50: 74VHC00 (NAND)

IC51: 74VHC00 (NAND)

IC52: 74VHC00 (NAND)

IC53: 74VHC00 (NAND)

IC54: 74VHC00 (NAND)

IC55: 74VHC00 (NAND)

IC56: 74VHC00 (NAND)

IC57: 74VHC00 (NAND)

IC58: 74VHC00 (NAND)

IC59: 74VHC00 (NAND)

IC60: 74VHC00 (NAND)

IC61: 74VHC00 (NAND)

IC62: 74VHC00 (NAND)

IC63: 74VHC00 (NAND)

IC64: 74VHC00 (NAND)

IC65: 74VHC00 (NAND)

IC66: 74VHC00 (NAND)

IC67: 74VHC00 (NAND)

IC68: 74VHC00 (NAND)

IC69: 74VHC00 (NAND)

IC70: 74VHC00 (NAND)

IC71: 74VHC00 (NAND)

IC72: 74VHC00 (NAND)

IC73: 74VHC00 (NAND)

IC74: 74VHC00 (NAND)

IC75: 74VHC00 (NAND)

IC76: 74VHC00 (NAND)

IC77: 74VHC00 (NAND)

IC78: 74VHC00 (NAND)

IC79: 74VHC00 (NAND)

IC80: 74VHC00 (NAND)

IC81: 74VHC00 (NAND)

IC82: 74VHC00 (NAND)

IC83: 74VHC00 (NAND)

IC84: 74VHC00 (NAND)

IC85: 74VHC00 (NAND)

IC86: 74VHC00 (NAND)

IC87: 74VHC00 (NAND)

IC88: 74VHC00 (NAND)

IC89: 74VHC00 (NAND)

IC90: 74VHC00 (NAND)

IC91: 74VHC00 (NAND)

IC92: 74VHC00 (NAND)

IC93: 74VHC00 (NAND)

IC94: 74VHC00 (NAND)

IC95: 74VHC00 (NAND)

IC96: 74VHC00 (NAND)

IC97: 74VHC00 (NAND)

IC98: 74VHC00 (NAND)

IC99: 74VHC00 (NAND)

IC100: 74VHC00 (NAND)

TESTING WATER

ON























