

Visit by Ferry

by CARL TENNING

















HYAK





CLEARANCE
14 Ft. 6 In.

4 FIRE ZONE

NOTICE
ONCE LOADING HAS
BEGUN, THE CAPTAIN'S
PERMISSION IS REQUIRED
TO DISEMBARK
THE VESSEL.

HYAK
No. 1 END



















FRIDAY HARBOR
SAN JUAN ISLAND









Friday Street Landing

PORT OF FRIDAY HARBOR

Naknek
CHARTERS & DIVING
Naknek Charters & Diving

SALES & RENTALS
BOATS • KAYAKS • DINGHYS
FRIDAY HARBOR YACHTS
FRIDAY HARBOR MARINE
Full Service Marine Repair • Winter Boat Service
Wash/Craft, Upholstery, Repairs, Drydock Electric Service

RESERVED
NAKNEK CHARTERS & DIVING

Yacht-rental and hang-out with the J-pod
Dive's private space

WHALE WATCHING **DIVE CHARTERS** **FRIDAY HARBOR YACHTS**
WILDLIFE EXCURSIONS & KAYAK TOURS **RENTALS** **CLASSES**
EXCURSIONS INFO CENTER **FRIDAY HARBOR MARINE**
Call 379-8808 San Juan Safaris & Tours San Juan Safaris & Tours San Juan Safaris & Tours

SAN JUAN EXCURSIONS
SAN JUAN ISLAND MARINE CENTER
NAK NEK DIVE CHARTERS

RESERVED
SAN JUAN ISLAND MARINE CENTER

SAN JUAN SAFARI
AND YACHT CHARTERS
ISLAND COMPUTER

RESTROOMS LOCATED ON PIER









SEA DANCER

WN 563NJ

ODYSSEY

NAKNEK

WESTERN PRIDE

LIFELINE









WN 2266RP

WN 7 63 NJ

Spring Street Landing

















G

OVERNIGHT
MOORAGE

LAZY KA III

















SEA TLE

SEA TLE
CONDO

SEA TLE





US Customs



All vessels must immediately report to U.S. Customs and Border Protection if you:

- Arrived or returned from a foreign location
- Arrived at a port of call in a foreign location
- Arrived at a port of call in a foreign location
- Arrived at a port of call in a foreign location

Failure to report may result in civil penalties and fines up to \$10,000 per day of non-compliance.

For more information visit www.cbp.gov

To report, call (800) 542-3943

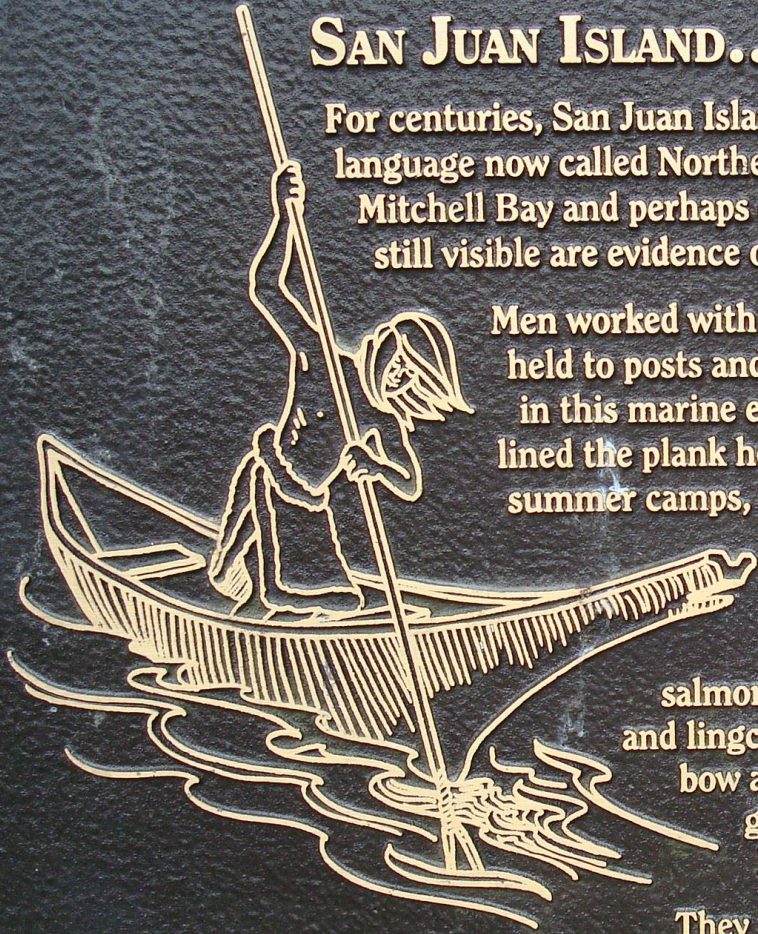






SAN JUAN ISLAND... HOME TO COAST SALISH PEOPLE

For centuries, San Juan Island was home to Coast Salish people who spoke the language now called Northern Straits. There were villages on Garrison Bay and Mitchell Bay and perhaps elsewhere on the island, and the many shell middens still visible are evidence of seasonal use.



Men worked with wood, making the great houses of wide cedar planks held to posts and beams. And they made the canoes that were necessary in this marine environment. Women made cat-tail and tule mats that lined the plank houses for warmth in winter and served as tents at summer camps, and they made beautiful blankets of dog wool and duck down.

The Northern Straits people trolled for chinook and coho salmon and set reef nets for sockeye and pink salmon. They caught halibut in the bank off American Camp and lingcod and rockfish off rocky shores. They hunted deer with bow and arrow or caught them in nets. They caught ducks in great nets fastened to poles as at Pole Island in Mosquito Pass near English Camp.

They gathered shellfish, picked berries and harvested camas bulbs and other plants that grew on the prairies such as the one at American Camp. Later, when the prairies were dry, they set fires to control the encroaching forest and keep them productive.

They cared for the land that sustained them. Their stewardship is our inheritance.

— Dr. Wayne Suttles





THE BBQ SHACK

Windermere

Schooners North SAILING ADVENTURE
ESTABLISHED 1992

FOR RENT

805406P
LC 58188



FOR RENT

ADVENTURE

RENT

★ Cash & Schooner ★

FINALLY OPEN

SPRING ST
STOP
NO TURN AROUND
FOR TRUCKS
& TRAILERS

2 HOUR
PERMIT
EXCEPT
HOLIDAYS

**KING'S
MARKET**

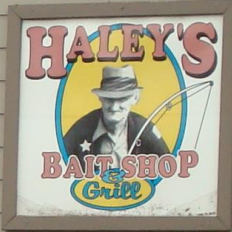
FIRST ST
SPRING ST
CATTLE POINT
ARLINGTON CAMP
FERRY
BRITISH CAMP
COUNTY PARK





HERBS
COLD BEER
SPICY
378-7076





175



2 HR
PARKING
8:00AM
TO 5:00PM





PALACE THEATRE
12:45 2:15 4:15 6:45
1:00 3:30 6:30 9:00
CARS 2 G
GREEN LANTERN PG-13

370 5666

Public Restrooms
←

ROCKY



Chamber of Commerce
Visitor Information Center
WELCOME

135

Softwear
Selling, Rent & Accessories

Grand Hotel
Queen Elizabeth

LATTE SHOP

OPEN





1907

COLDWELL BANKER
SAN JUAN ISLANDS, INC.

Be Chic
Boutique





Cask & Schooner
RESTAURANT
& PUBLIC HOUSE

★ Cask & Schooner ★

FINALLY
OPEN

FINALLY
OPEN

FRONT
SPRING ST

STOP
NO TURN AROUND
FOR TRUCKS
& TRAILERS

cafe

PELLINGRA
LAVENDER

the
bean
cafe

LAVENDER
PLANTS
4" - 13"
Gallon - \$9.95





COLDWELL BANKER
SAN JUAN ISLANDS, INC.

2 HOUR
STREET
PARKING
9:00 AM
TO 5:00 PM

MOTORCYCLE

MOTORCYCLE

OPEN













WHALE
WATCHING
(560) 378-1323



SERIOUS FUN
JOIN US!
www.sanjuansafaris.com

Sea Lion



























